

# GRATTAN STREET BIKE LANES

## Bouverie Street to Rathdowne Street

### Key changes:

- 1.3km of protected bike lanes (650m in each direction) on Grattan Street from Bouverie Street to Rathdowne Street
- Full separation kerbside protected bike lanes (except for a short section where there's a bus stop between Drummond Street and Rathdowne Street on the south side)
- Will connect to new protected bike lanes being delivered between Bouverie Street and Royal Parade as part of the Metro Tunnel Project
- Expands protected bicycle network linking to existing protected bike lanes on Swanston Street and Rathdowne Street
- 68 car parking bays will be retained, with 18 removed (net)
- Reduction in traffic lanes at midblock sections and intersections
- Green surface treatment to highlight bike lane at certain locations
- New vehicle hook turns at selected intersections to provide a safer environment for all road users and support the flow of traffic
- Asphalt resurfacing from Cardigan Street to Rathdowne Street
- New bus stop between Bouverie Street and Swanston Street
- Existing bus stops relocated at Cardigan Street and Lygon Street

### Details of treatments for this project



Concrete separator kerb



Separation at intersections



Concrete separator island



Mountable kerb



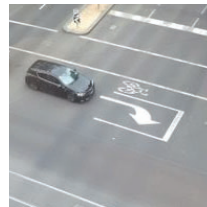
Road narrowing/painted island



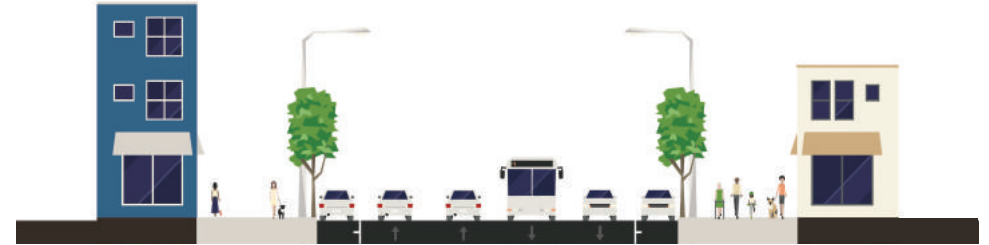
Green surface treatment at selected locations



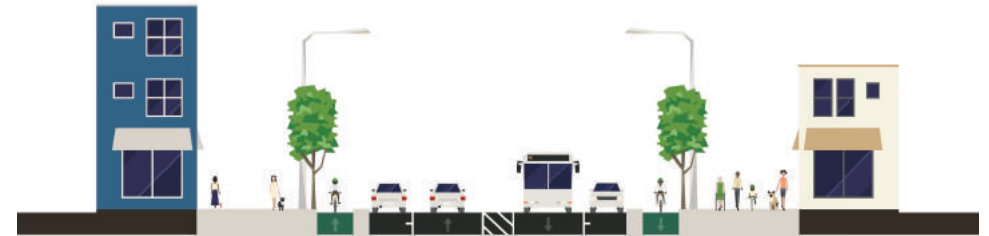
Flexible bollards



Vehicle hook turn boxes



Existing conditions on Grattan Street



Proposed new conditions on Grattan Street



A map of the bike lane network in Carlton

# GRATTAN STREET BIKE LANES (1/5)

## Section: Bouverie Street to Swanston Street

### Key changes:

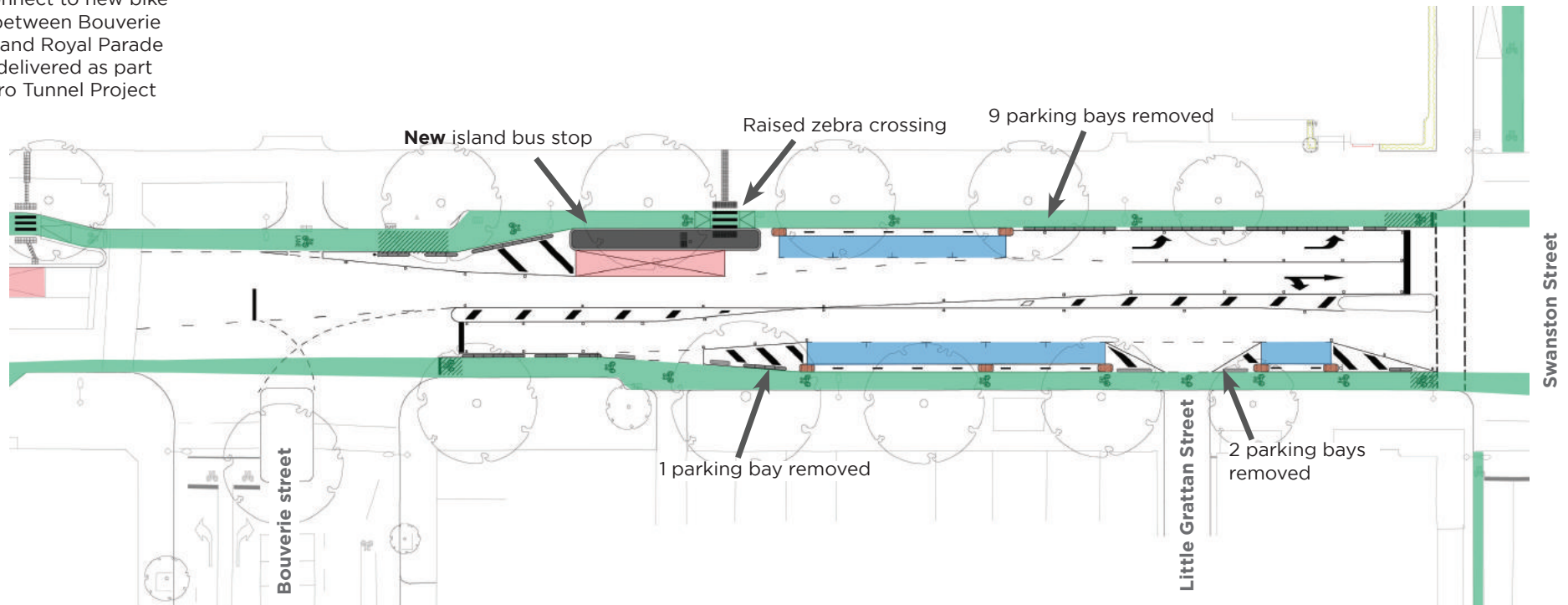
- Kerbside protected bike lanes
- Parking retained on both sides
- 12 parking bays removed
- Midblock reduction of traffic lanes (both directions)
- Lane reduction on approach to signalised intersections
- New bus stop



### Legend:

- Protected bike lane
- Parking bay
- Spike down island
- Spike down kerb
- Green surface treatment
- Bus zone

Will connect to new bike lanes between Bouverie Street and Royal Parade being delivered as part of Metro Tunnel Project



# GRATTAN STREET BIKE LANES (2/5)

## Section: Swanston Street to Cardigan Street

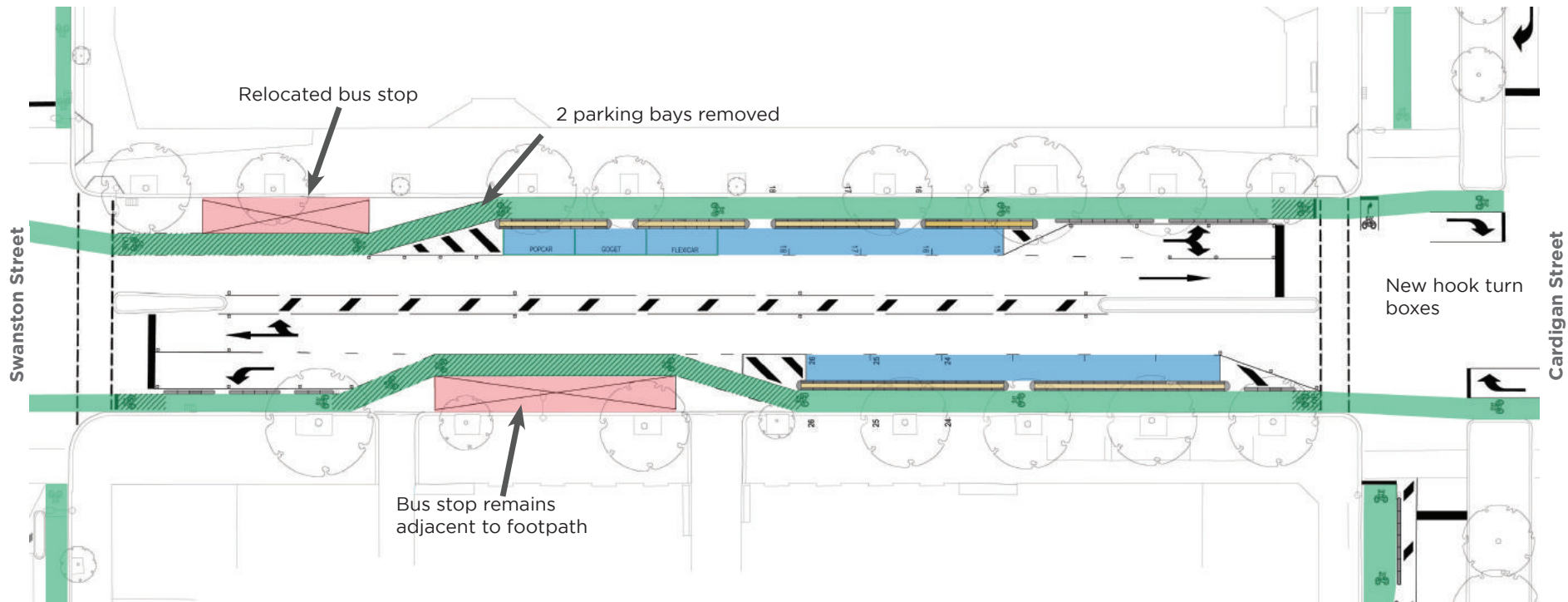
### Key changes:

- Kerbside protected bike lanes
- Parking retained on both sides
- 2 parking bays removed
- Existing eastbound bus stop relocated 60m west
- Midblock reduction of traffic lanes (both directions)
- Lane reduction on approach to signalised intersections
- New hook turns at Cardigan Street
- Asphalt resurfacing in this block



### Legend:

- Protected bike lane
- Parking bay
- Concrete separator island
- Concrete separator kerb
- Green surface treatment
- Bus zone



# GRATTAN STREET BIKE LANES (3/5)

## Section: Cardigan Street to Lygon Street

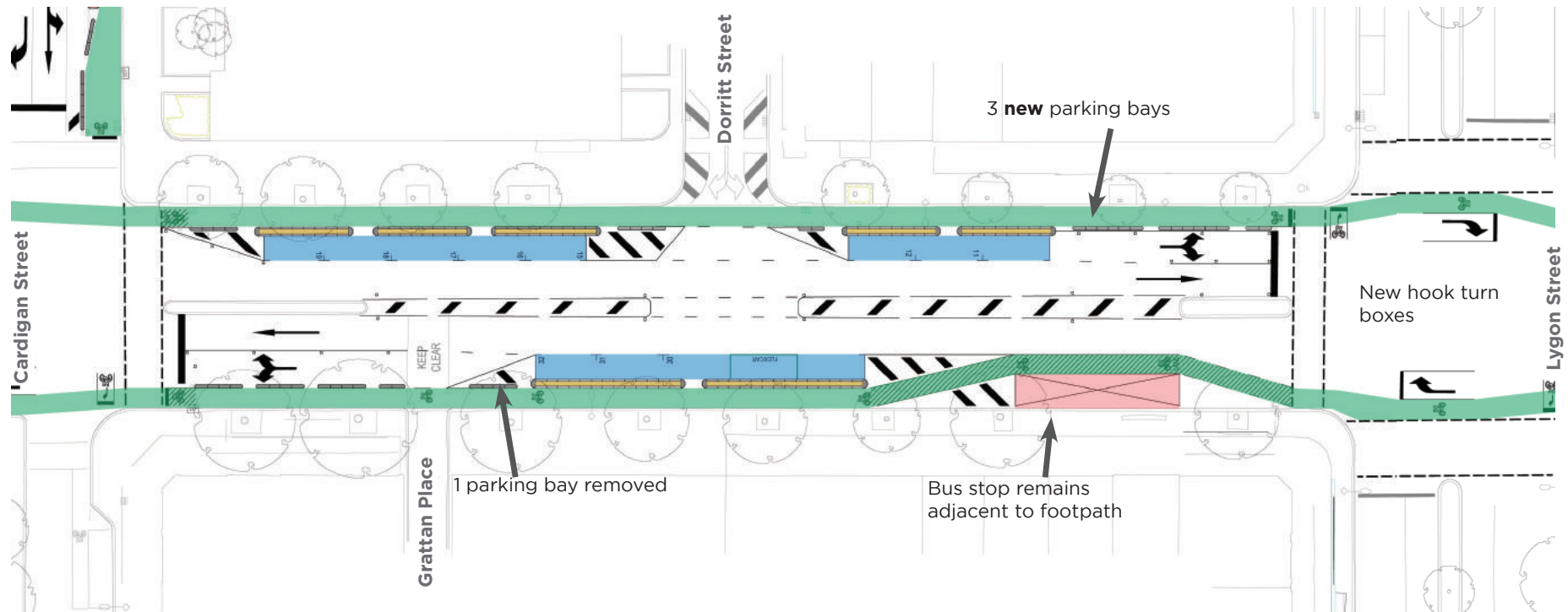
### Key changes:

- Kerbside protected bike lanes
- Parking retained on both sides
- 2 additional parking bays (net)
- Midblock reduction of traffic lanes (both directions)
- Maintains existing lanes on approach to signalised intersections
- Existing eastbound bus stop relocated to east side of Lygon Street intersection
- New hook turns at Lygon Street
- Asphalt resurfacing in this block



### Legend:

- Protected bike lane
- Parking bay
- Concrete separator island
- Concrete separator kerb
- Green surface treatment
- Bus zone





# GRATTAN STREET BIKE LANES (4/5)

## Section: Lygon Street to Drummond Street

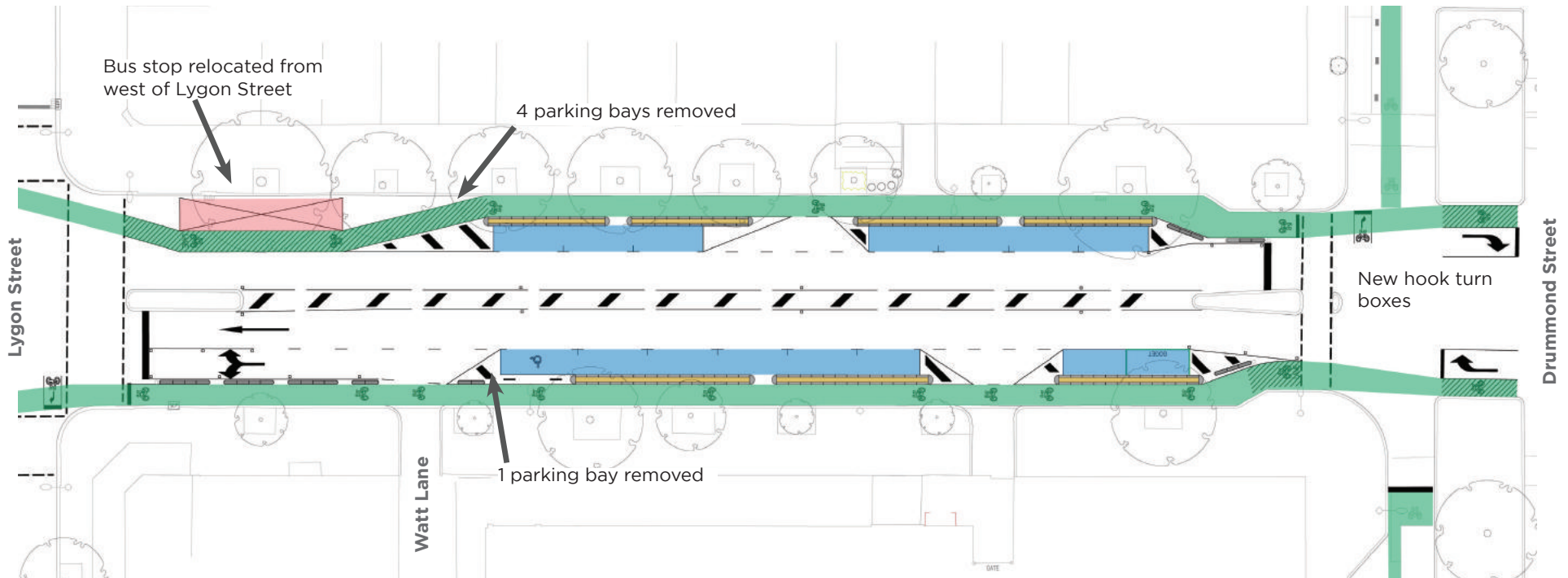
### Key changes:

- Kerbside protected bike lanes
- Parking retained on both sides
- 5 parking bays removed
- Midblock reduction of traffic lanes (both directions)
- Lane reduction on approach to signalised intersections
- New hook turns at Drummond Street
- Asphalt resurfacing in this block



### Legend:

- Protected bike lane
- Parking bay
- Concrete separator island
- Concrete separator kerb
- Green surface treatment
- Bus zone



# GRATTAN STREET BIKE LANES (5/5)






## Section: Drummond Street to Rathdowne Street

### Key changes:

- Kerbside protected bike lane (eastbound)
- Bike lane with painted buffer (westbound)
- Parking retained on both sides
- 1 parking bay removed
- Midblock reduction of traffic lanes (both directions)
- Lane reduction on approach to signalised intersections
- Asphalt resurfacing in this block



### Legend:

- Bike lane 
- Parking bay 
- Concrete separator island 
- Concrete separator kerb 
- Green surface treatment 
- Bus zone 